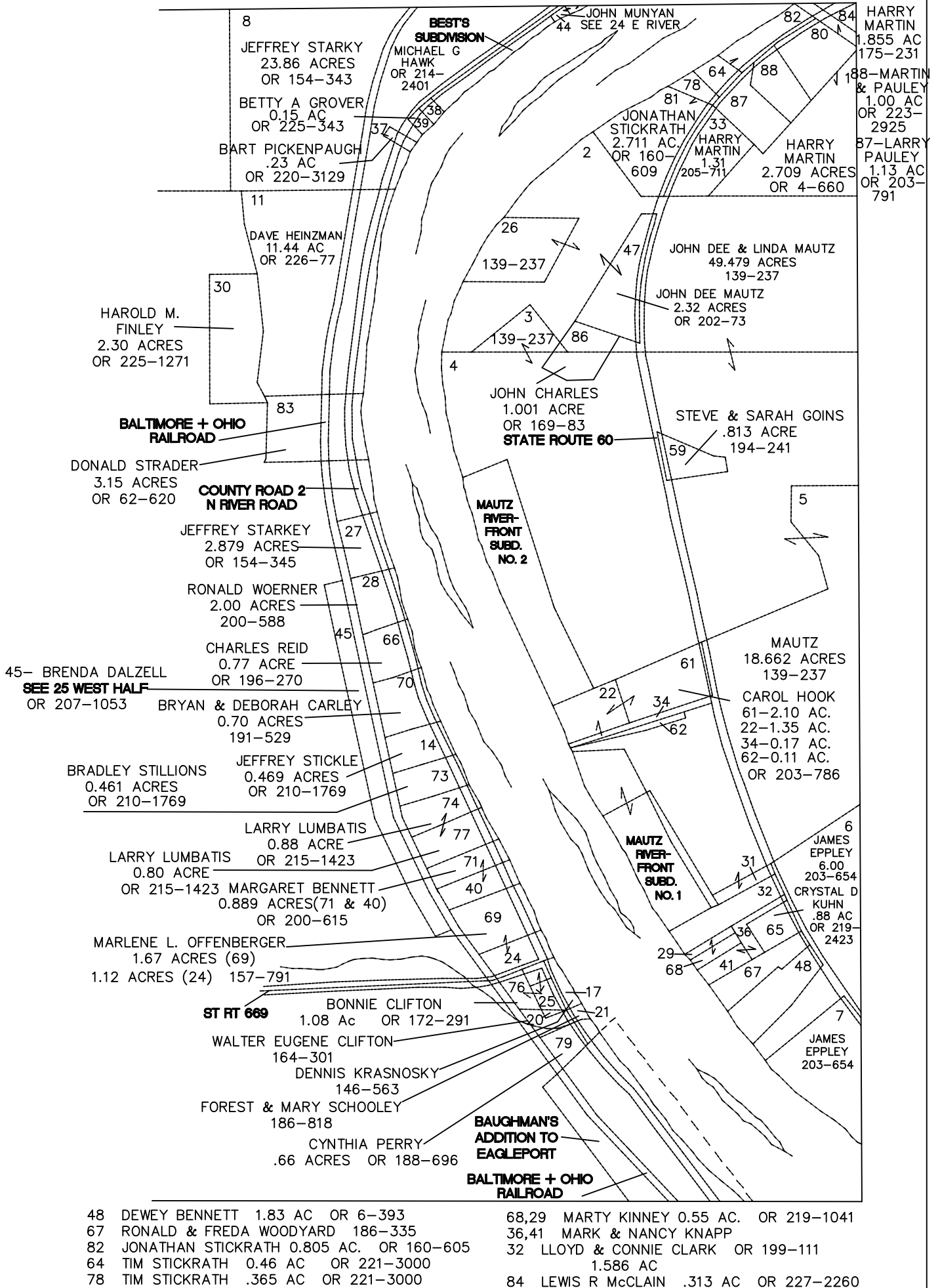


BLOOM TOWNSHIP

RANGE 13 TOWNSHIP 10 SECTION 25 EAST HALF

SCALE: 1" = 400'



8 JEFFREY STARKY 23.86 ACRES OR 154-343
 BETTY A GROVER 0.15 AC OR 225-343
 BART PICKENPAUGH .23 AC OR 220-3129
 11 DAVE HEINZMAN 11.44 AC OR 226-77
 30 HAROLD M. FINLEY 2.30 ACRES OR 225-1271
 DONALD STRADER 3.15 ACRES OR 62-620
 JEFFREY STARKEY 2.879 ACRES OR 154-345
 RONALD WOERNER 2.00 ACRES 200-588
 CHARLES REID 0.77 ACRE OR 196-270
 45- BRENDA DALZELL SEE 25 WEST HALF OR 207-1053
 BRYAN & DEBORAH CARLEY 0.70 ACRES 191-529
 BRADLEY STILLIONS 0.461 ACRES OR 210-1769
 JEFFREY STICKLE 0.469 ACRES OR 210-1769
 LARRY LUMBATIS 0.88 ACRE OR 215-1423
 LARRY LUMBATIS 0.80 ACRE OR 215-1423
 MARGARET BENNETT 0.889 ACRES(71 & 40) OR 200-615
 MARLENE L. OFFENBERGER 1.67 ACRES (69) 1.12 ACRES (24) 157-791
 BONNIE CLIFTON 1.08 Ac OR 172-291
 WALTER EUGENE CLIFTON 164-301
 DENNIS KRASNOSKY 146-563
 FOREST & MARY SCHOOLEY 186-818
 CYNTHIA PERRY .66 ACRES OR 188-696

82 JOHN MUNYAN 44 SEE 24 E RIVER
 MICHAEL G HAWK OR 2401-2401
 JONATHAN STICKRATH 2.711 AC OR 160-605
 HARRY MARTIN 1.31 205-711
 HARRY MARTIN 2.709 ACRES OR 4-660
 JOHN DEE & LINDA MAUTZ 49.479 ACRES 139-237
 JOHN DEE MAUTZ 2.32 ACRES OR 202-73
 JOHN CHARLES 1.001 ACRE OR 169-83 STATE ROUTE 60
 STEVE & SARAH GOINS .813 ACRE 194-241
 MAUTZ 18.662 ACRES 139-237
 CAROL HOOK 61-2.10 AC. 22-1.35 AC. 34-0.17 AC. 62-0.11 AC. OR 203-786
 MAUTZ RIVER-FRONT SUBD. NO. 1
 MAUTZ RIVER-FRONT SUBD. NO. 2
 JAMES EPPLEY 6.00 203-654
 CRYSTAL D KUHN .88 AC OR 219-2423
 JAMES EPPLEY 203-654
 48 DEWEY BENNETT 1.83 AC OR 6-393
 67 RONALD & FRED A WOODYARD 186-335
 82 JONATHAN STICKRATH 0.805 AC. OR 160-605
 64 TIM STICKRATH 0.46 AC OR 221-3000
 78 TIM STICKRATH .365 AC OR 221-3000
 68,29 MARTY KINNEY 0.55 AC. OR 219-1041
 36,41 MARK & NANCY KNAPP 1.586 AC
 32 LLOYD & CONNIE CLARK OR 199-111
 84 LEWIS R McCLAIN .313 AC OR 227-2260