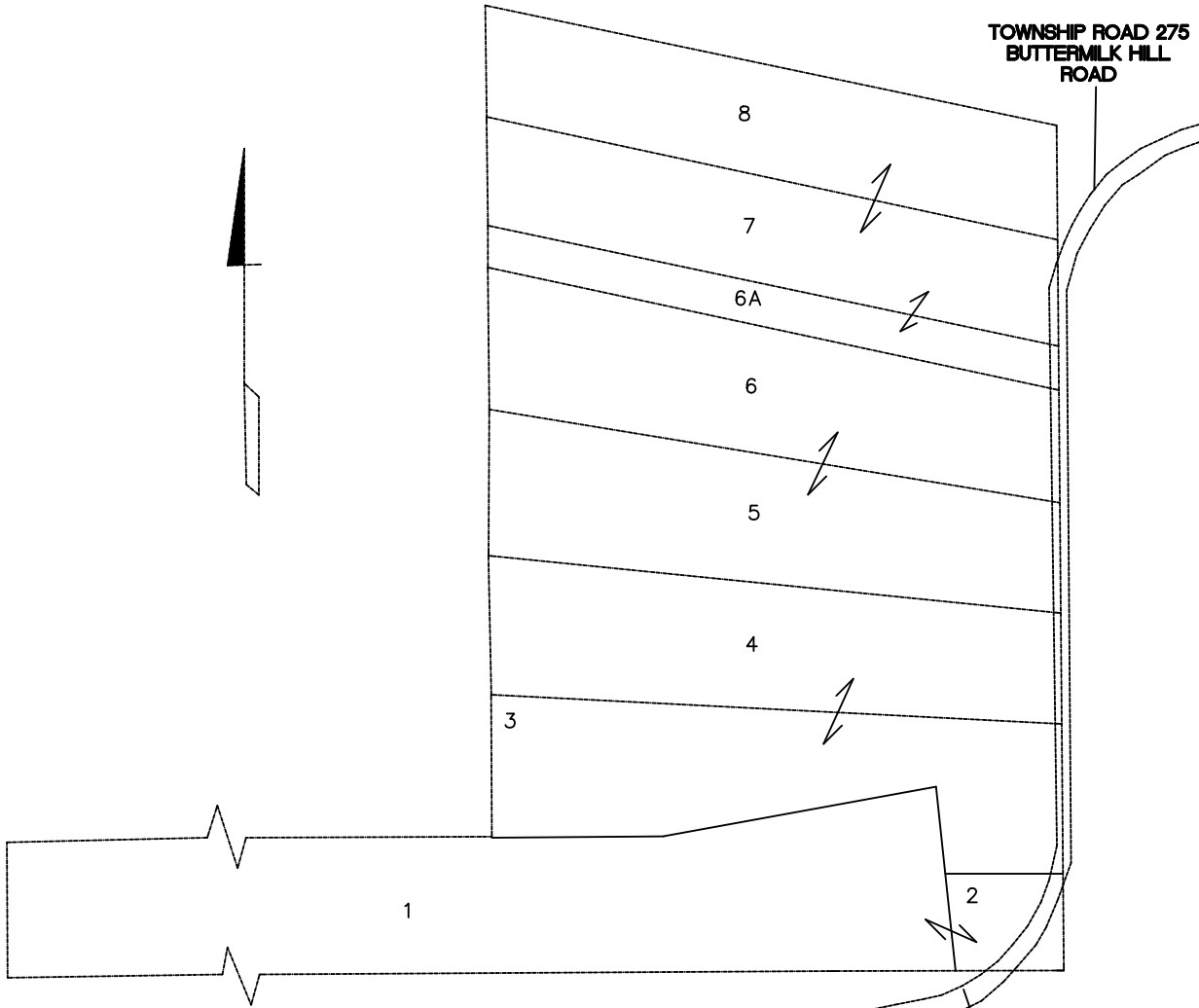
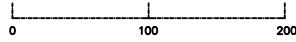


BLOOM TOWNSHIP

RANGE 12 TOWNSHIP 11 SECTION 22

FAYE I. SMITHVILLE SUBDIVISION

SCALE: 1 INCH = 100 FEET



- 1- MARK A TOTMAN (etal) OR 211-1682
- 2- MARK A TOTMAN (etal) OR 211-1682
- 3- RANDALL & CANDACE TOTMAN OR 130-585
- 4- RANDAL TOTMAN OR 153-493
- 5- BRADLEY N BATES OR 218-2332
- 6- BRADLEY N BATES OR 218-2332
- 7- JOSHUA MAYLE OR 227-295
- 8- JOSHUA MAYLE OR 227-295
- 6A- RONALD DOWNING OR 119-156

TOWNSHIP ROAD 275
BUTTERMLK HILL ROAD