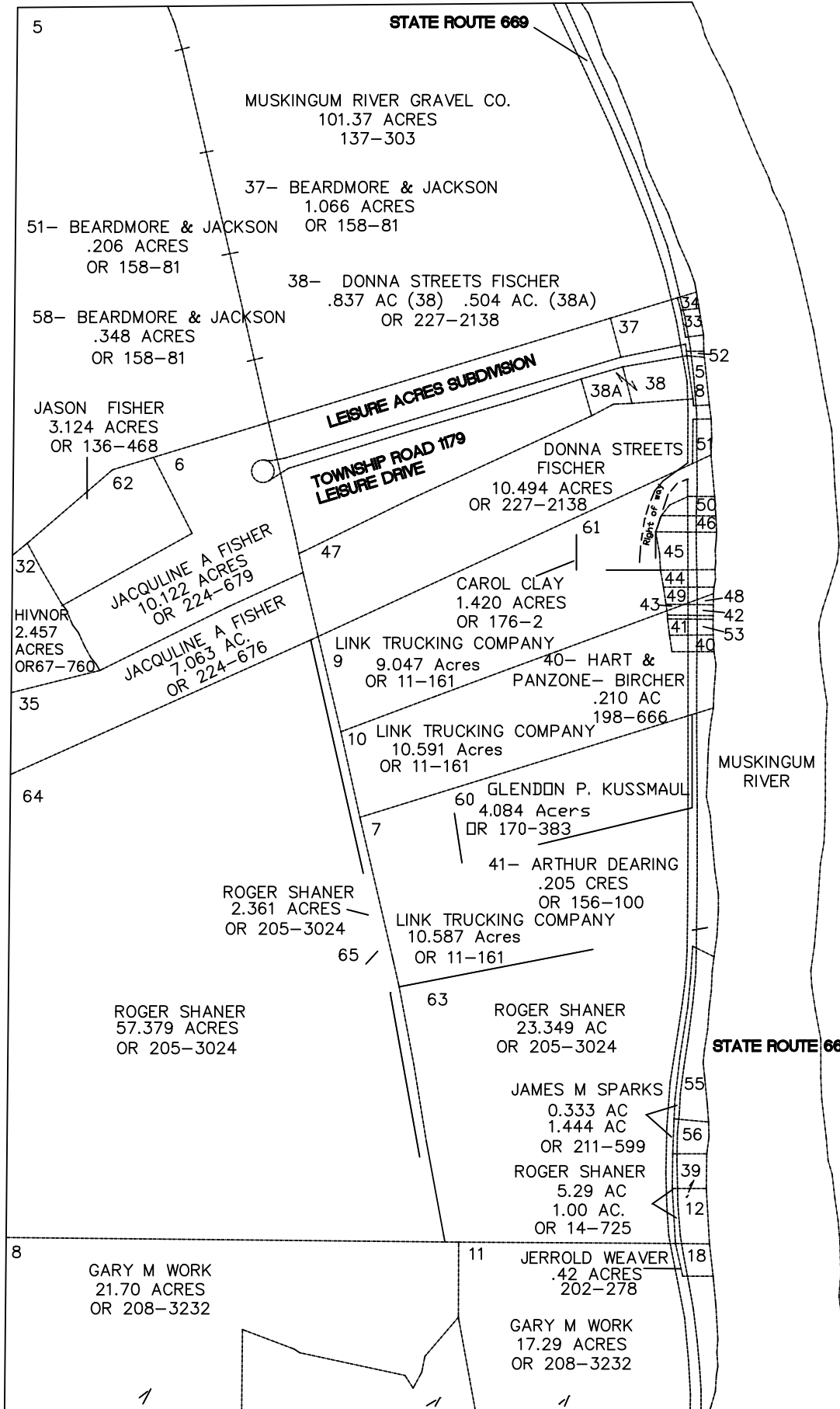
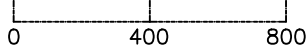


BLOOM TOWNSHIP

RANGE 12 TOWNSHIP 11 SECTION 21 WEST HALF

SCALE: 1" = 400'



- | | |
|---|--|
| 33- CHARLES SPOHN .184 ACRES OR 203-3082 | 46- PAUL CHAMBERS .247 ACRES 195-663 |
| 34- DAN SPOHN 0.0999 ACRE OR 217-1273 | 48- GLENDON KUSSMAUL 0.047 ACRES OR 209-520 |
| 42- GLENDON KUSSMAUL .146 ACRES OR 209-520 | 49- GLENDON KUSSMAUL .182 ACRES OR 209-520 |
| 43- GLENDON KUSSMAUL .012 ACRES OR 209-520 | 50- JOSEPH THARP .172 ACRES 198-41 |
| 44- MARK SCHULTZ 0.228 ACRES OR 204-3217 | 52- BEARDMORE & JACKSON .019 ACRES OR 158-81 |
| 45- FOREST R BOOKMAN .584 ACRES OR 227-1214 | 53- ARTHUR DEARING .053 ACRES OR 156-100 |