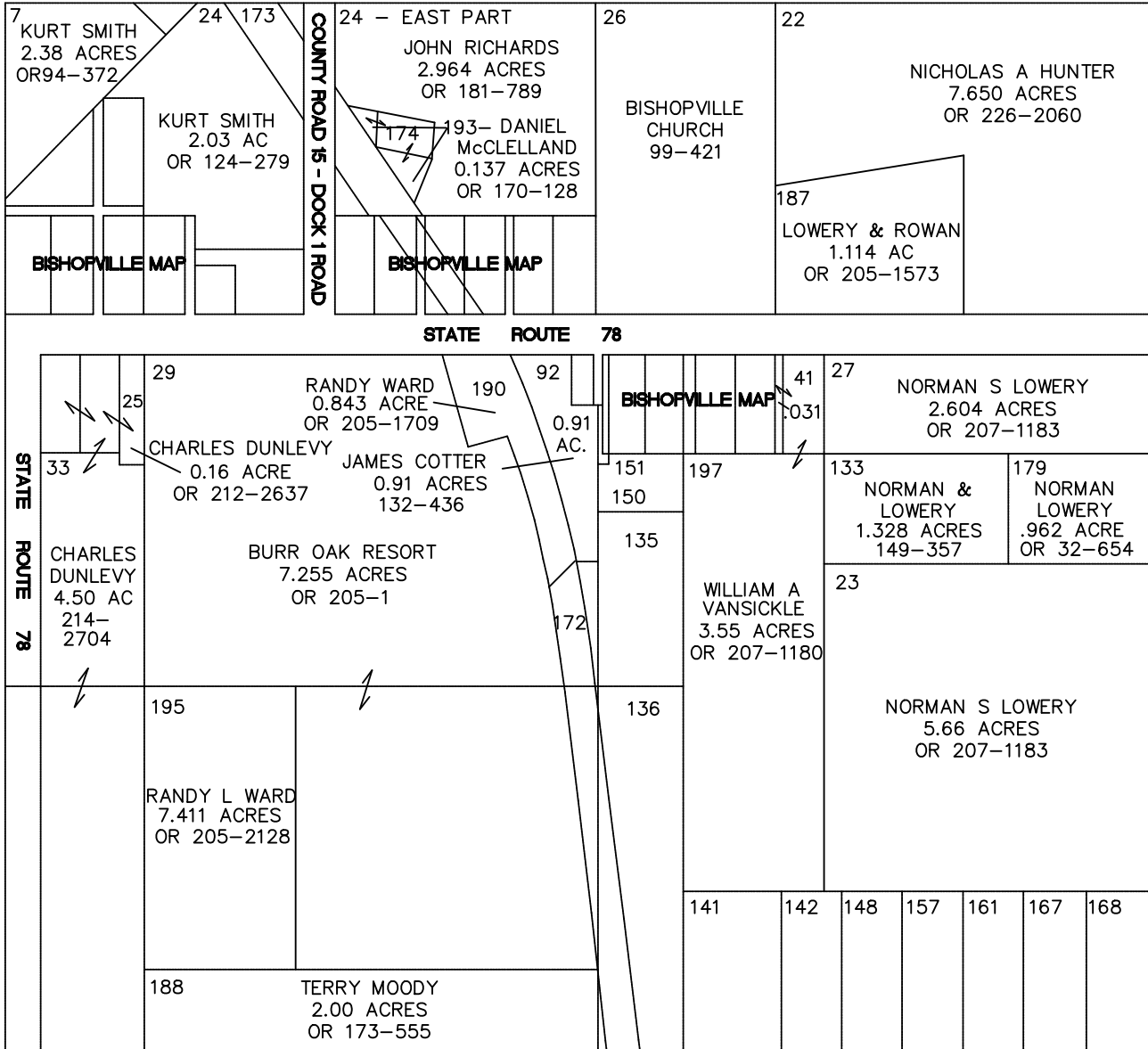


HOMER TOWNSHIP

RANGE 13 TOWNSHIP 7 SECTION 34
 PLAT OF BISHOPVILLE AND SURROUNDING AREA

SCALE: 1 INCH = 200 FEET



135 - HOMER TOWNSHIP TRUSTEES	0.769 ACRE	168-683
136 - HOMER TOWNSHIP TRUSTEES	1.890 ACRE	168-683
141 - JEFFREY & VICTORIA ROSS	0.910 ACRE	159-225
142 - JEFFREY & VICTORIA ROSS	0.570 ACRE	159-225
148 - JEFFREY & VICTORIA ROSS	0.570 ACRE	OR 33-282
150 - HOMER TOWNSHIP TRUSTEES	VACATED ALLEY	
151 - HOMER TOWNSHIP TRUSTEES	VACATED ALLEY	
157 - JEFFREY & VICTORIA ROSS	0.570 ACRE	OR 33-282
161 - JEFFREY & VICTORIA ROSS	0.570 ACRE	OR 33-282
167 - JEFFREY & VICTORIA ROSS	0.570 ACRE	OR 33-282
168 - JEFFREY & VICTORIA ROSS	0.580 ACRE	OR 33-282
172 - HOMER TOWNSHIP TRUSTEES	0.157 ACRE	OR 22-273
173 - FRED M WALLACE	0.870 ACRE	OR 224-799
174 - DANIEL McCLELLAND	0.320 ACRE	146-221

