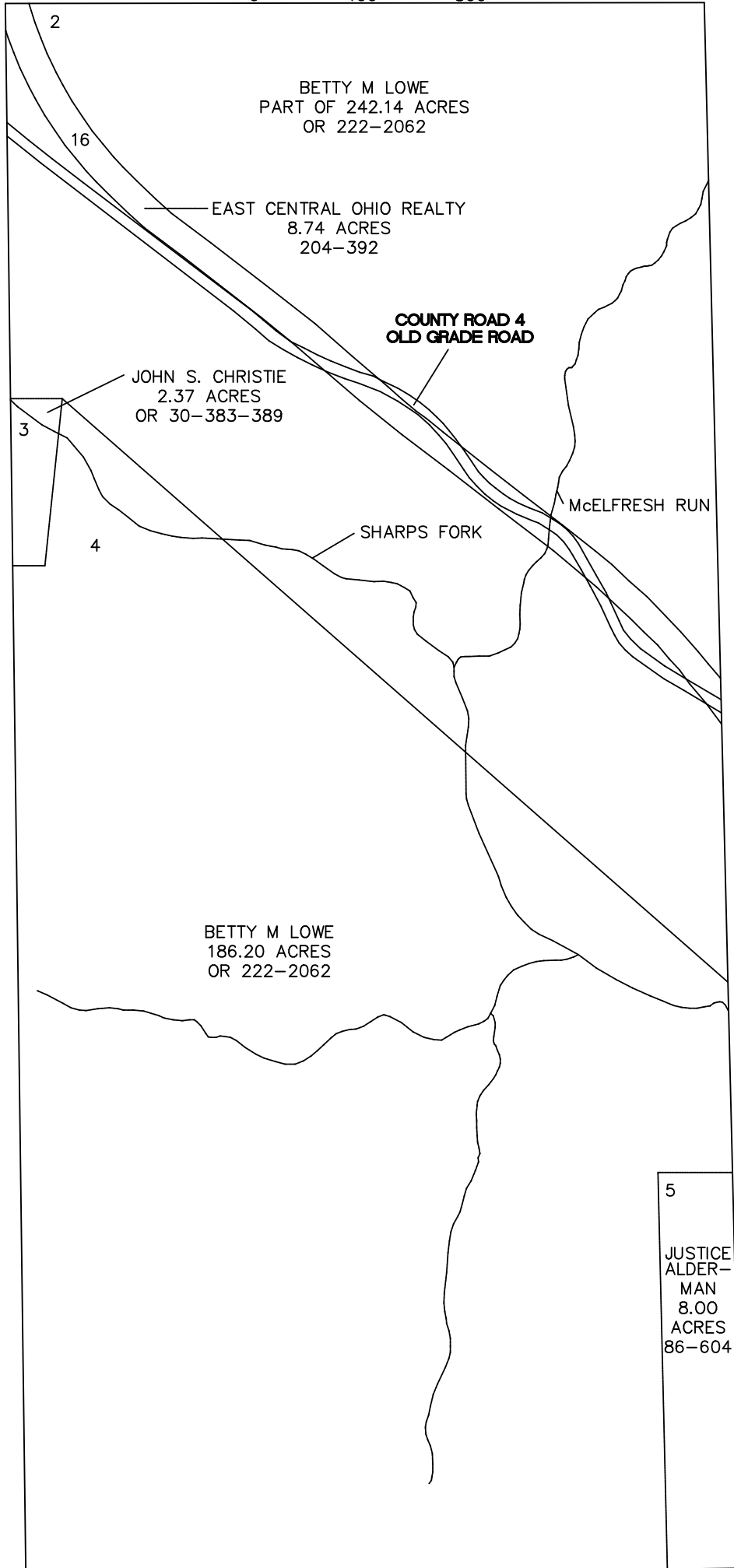
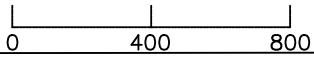


HOMER TOWNSHIP

RANGE 13 TOWNSHIP 7 SECTION 2 WEST HALF

SCALE: 1" = 400'



BETTY M LOWE
PART OF 242.14 ACRES
OR 222-2062

EAST CENTRAL OHIO REALTY
8.74 ACRES
204-392

COUNTY ROAD 4
OLD GRADE ROAD

JOHN S. CHRISTIE
2.37 ACRES
OR 30-383-389

McELFRESH RUN

SHARPS FORK

BETTY M LOWE
186.20 ACRES
OR 222-2062

5

JUSTICE
ALDER-
MAN
8.00
ACRES
86-604