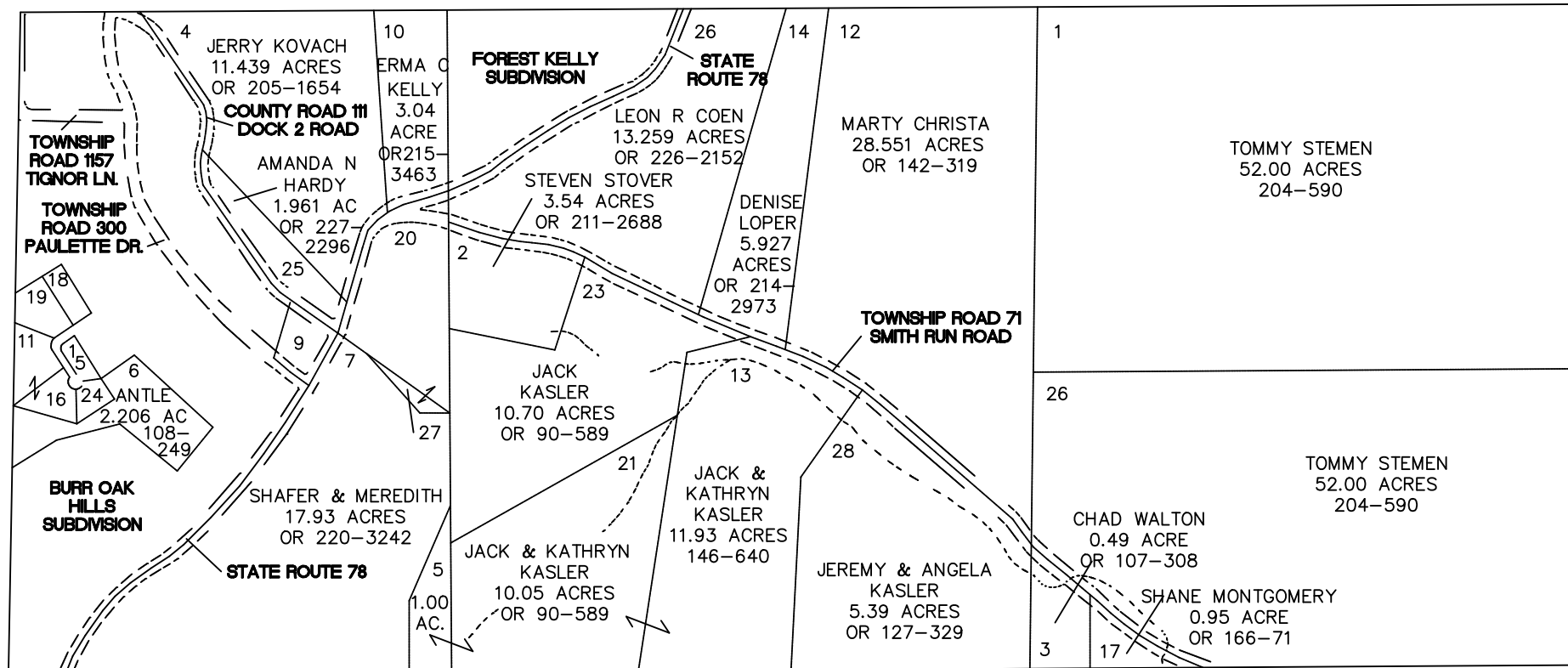
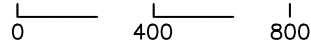


HOMER TOWNSHIP

RANGE 13 TOWNSHIP 7 FRACTIONAL SECTION 35

SCALE: 1" = 400'



- 9 - TONYA NOLAND OR 109-722
- 11,15,16 - FRANK MEAGHER 183-366
- 18,19 - PETER SCHWENDEMEN OR 9-266 & 182-351
- 20 - JOHN O KEIRNS 4.64 AC. OR 219-2416
- 24 - EVAN & ANNA MORGAN 167-451
- 27 - JOHN O KEIRNS 0.31 Acres OR 219-2416

