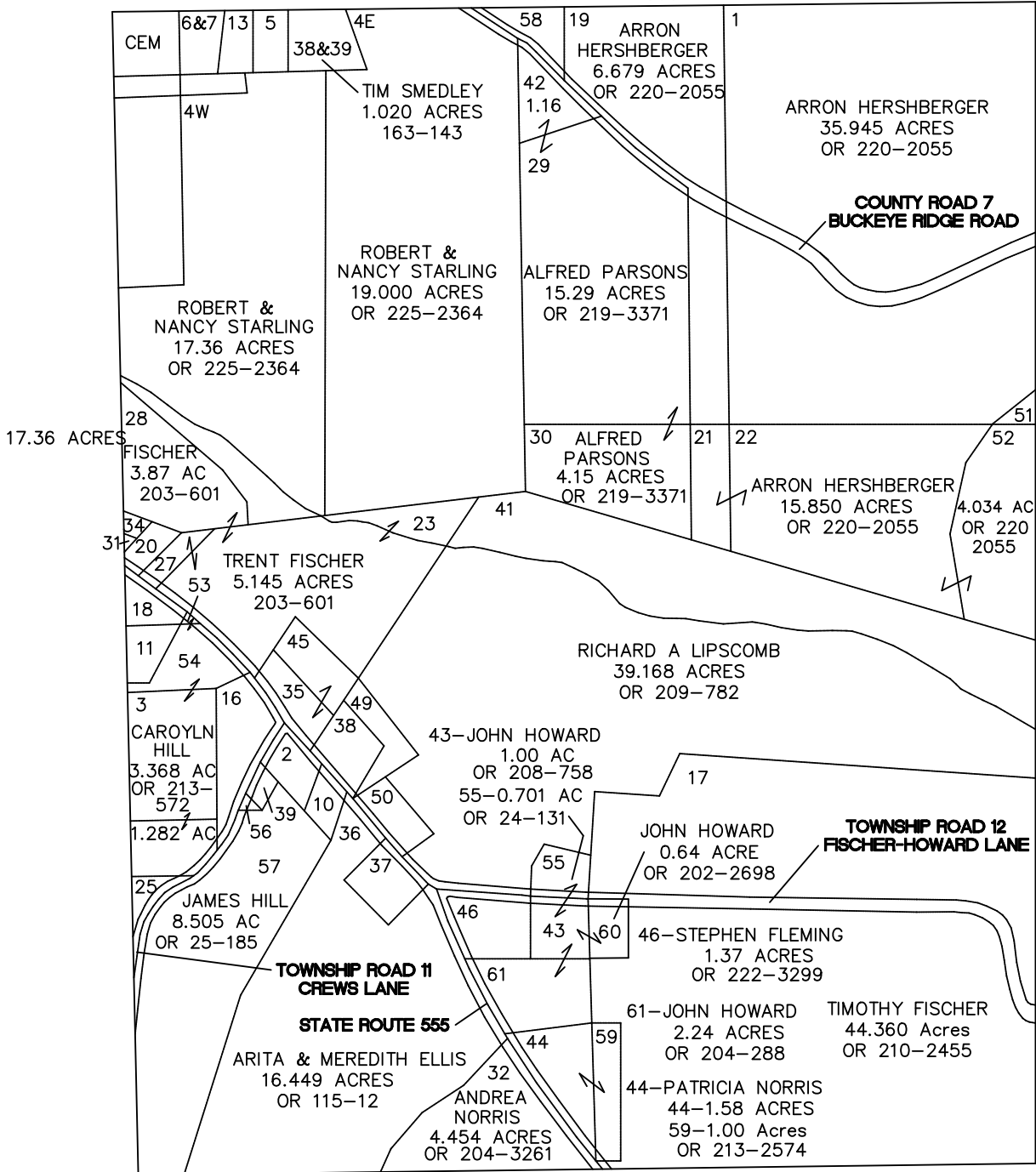


# MARION TOWNSHIP

RANGE 12 TOWNSHIP 8 FRACTIONAL SECTION 2

SCALE: 1" = 400'

0 400 800



2 - SHANNON NORTH	0.820 ACRE	OR 179-573
5 - BOARD OF TRUSTEES	0.530 ACRE	121-241
6,7 - MAX L SEYFRIED	0.550 ACRE	OR 226-2904
10 - LISA HILL	0.732 ACRE	OR 62-196
11 - CHESTERHILL FIRE DEPT.	0.390 ACRE	198-75
13 - MAX L SEYFRIED	0.500 ACRE	OR 226-2904
16 - HILL, MAYLE, HATZER	1.000 ACRE	OR 135-237
18 - CHESTERHILL FIRE DEPT.	0.815 ACRE	198-75
20 - NELSON & GLORIA MYERS	0.370 ACRE	206-316
25 - STEPHEN MAYLE	0.500 ACRE	182-355
31 - NORMA JEAN BOWMAN	0.040 ACRE	OR 220-117
34 - NORMA JEAN BOWMAN	0.090 ACRE	OR 220-117
35-45 - SHAW & RUCKER	0.980 ACRE	OR 227-655
37 - CHARLES R BAILEY	0.747 ACRE	OR 195-17
38 - CECIL MAYLE	0.958 ACRE	OR 14-80
39 - ALISA L HILL	0.240 ACRE	OR 74-19
49 - CECIL MAYLE	0.724 ACRE	OR 14-80
50 - CHARLENE PARSONS	0.659 ACRE	OR 197-536
51 - CALVIN MILLER	0.225 ACRE	197-690
53 - CAROLYN S HILL	0.078 ACRE	OR 213-572
54 - CAROLYN S HILL	1.180 ACRE	OR 213-572
56 - JAMES O. HILL	0.080 ACRE	OR 25-182
58 - SUPER SOLUTIONS LLC	0.701 ACRE	OR 225-1883