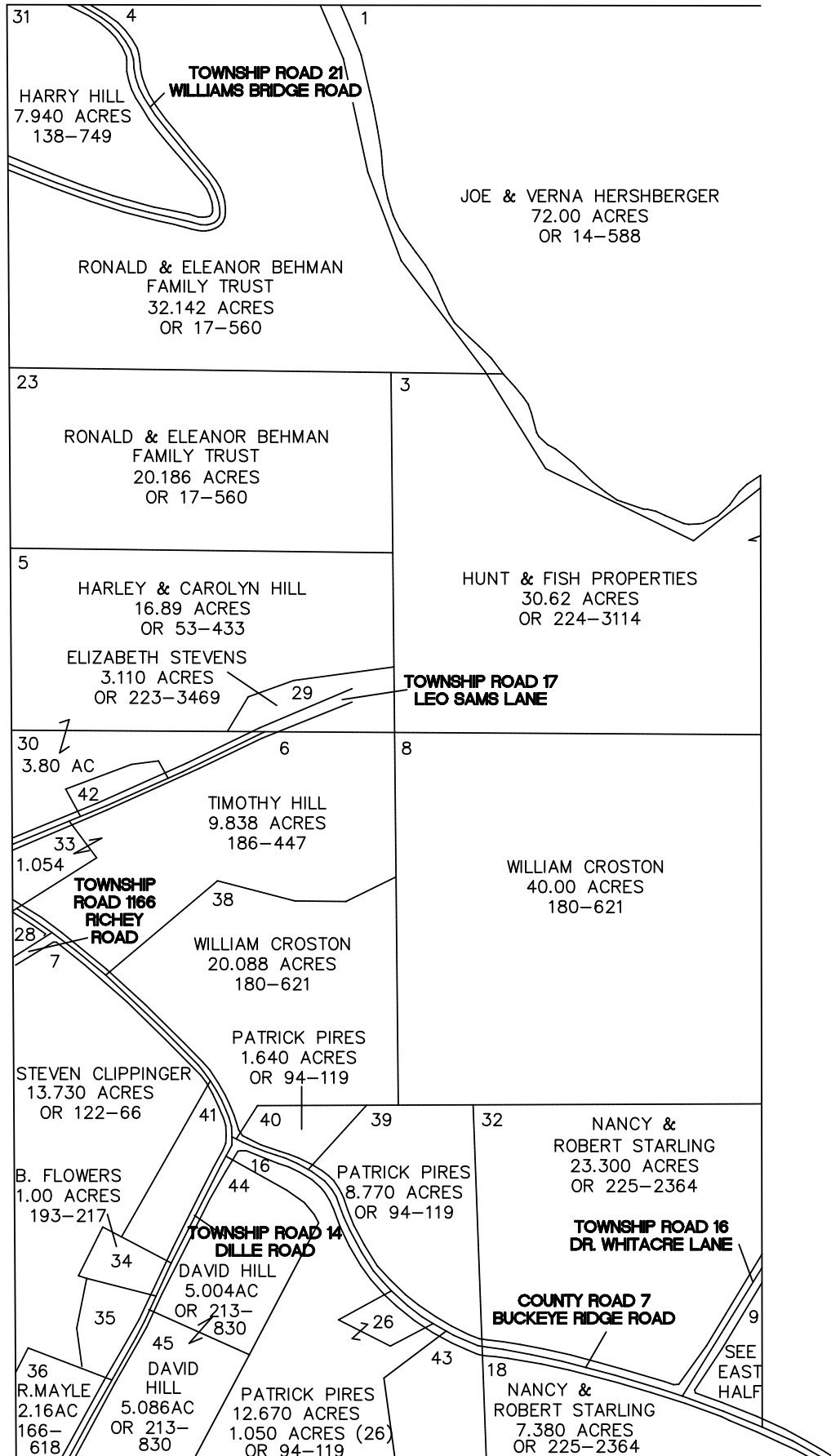
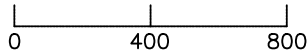


# MARION TOWNSHIP

RANGE 12 TOWNSHIP 8 SECTION 3 WEST HALF

SCALE: 1" = 400'



28 - LLOYD COOK et2al	0.190 ACRE	OR 202-1253
35 - RONNIE MAYLE	1.480 ACRE	OR 22-178
41 - DAVID HILL	3.000 ACRE	198-781
42 - JOSEPH JONES	0.765 ACRE	OR 53-307
43 - FLOWERS & NICHOLS	5.00 ACRE	OR 93-128