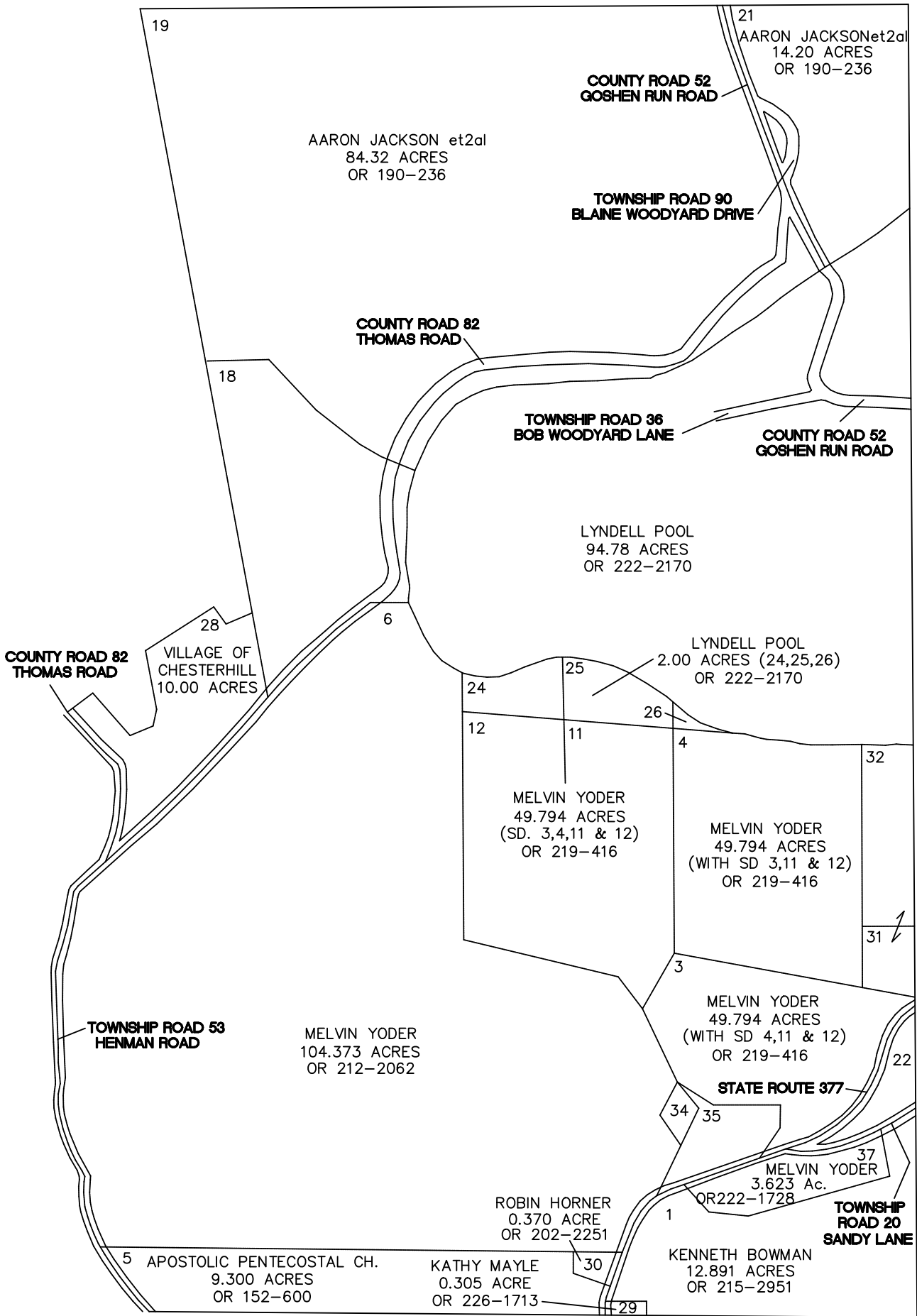
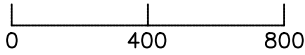


MARION TOWNSHIP

RANGE 12 TOWNSHIP 8 SECTION 16 EAST HALF

SCALE: 1" = 400'



22 - GEWERTZ, RIZZO & KIRKBRIDE 2.06 ACRES 182-432
 31,32 - PAUL NORRIS 1.39 AC., 3.480 AC 142-125
 34,35 - STEPHANIE MAYLE 0.26 AC., 2.415 AC 198-753