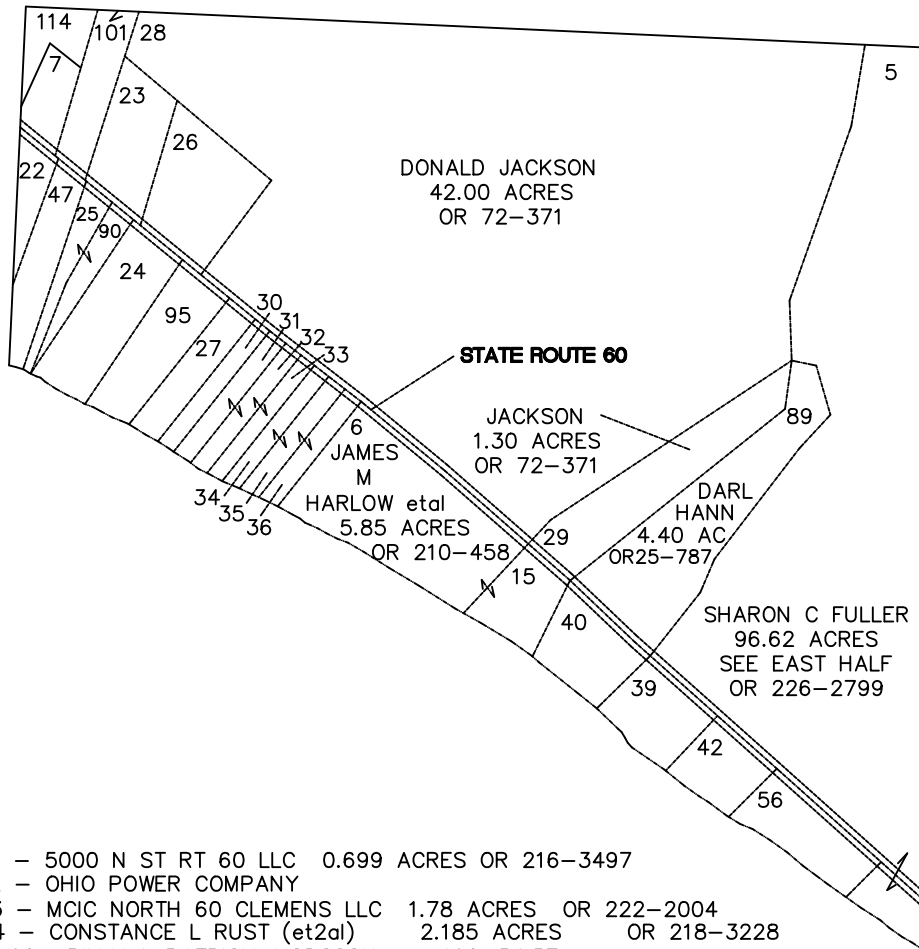
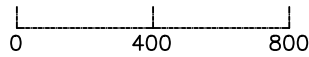


MORGAN TOWNSHIP

RANGE 12 TOWNSHIP 10 SECTION 3 WEST HALF

SCALE: 1" = 400'



- 7 - 5000 N ST RT 60 LLC 0.699 ACRES OR 216-3497
- 22 - OHIO POWER COMPANY
- 23 - MCIC NORTH 60 CLEMENS LLC 1.78 ACRES OR 222-2004
- 24 - CONSTANCE L RUST (et2al) 2.185 ACRES OR 218-3228
- 25,90 - BILLY & PATRICIA HODGSON 190-54,57
- 26 - UNITED TELEPHONE COMPANY 2.47 ACRES 136-198
- 27 - DONALD JACKSON 1.00 ACRE OR 72-371
- 30 - MELISSA SHAFFER 0.503 ACRE OR 151-500
- 31-32-33 - GALEN-MARY WOODWARD OR 81-134
- 34-35-36 - DIANE L RIDENOUR OR 227-1706
- 39 - ROBERT BURDETTE 1.495 ACRES OR 201-752
- 40 - DONALD & LORETTA MILLER 1.87 ACRES 143-259
- 42 - ROBERT L BURDETTE 1.11 ACRES OR 226-2609
- 47 - DOWNIE NELSON 0.950 ACRE 102-63
- 56 - QUICK 60 LLC 1.693 ACRES OR 223-2351
- 95 - CONSTANCE RUST 1.736 ACRES OR 173-537
- 101 - JONATHAN WELLS 1.083 ACRES OR 207-1354
- 114 - TRENNAKEL CO LLC 0.657 ACRES OR 204-3115