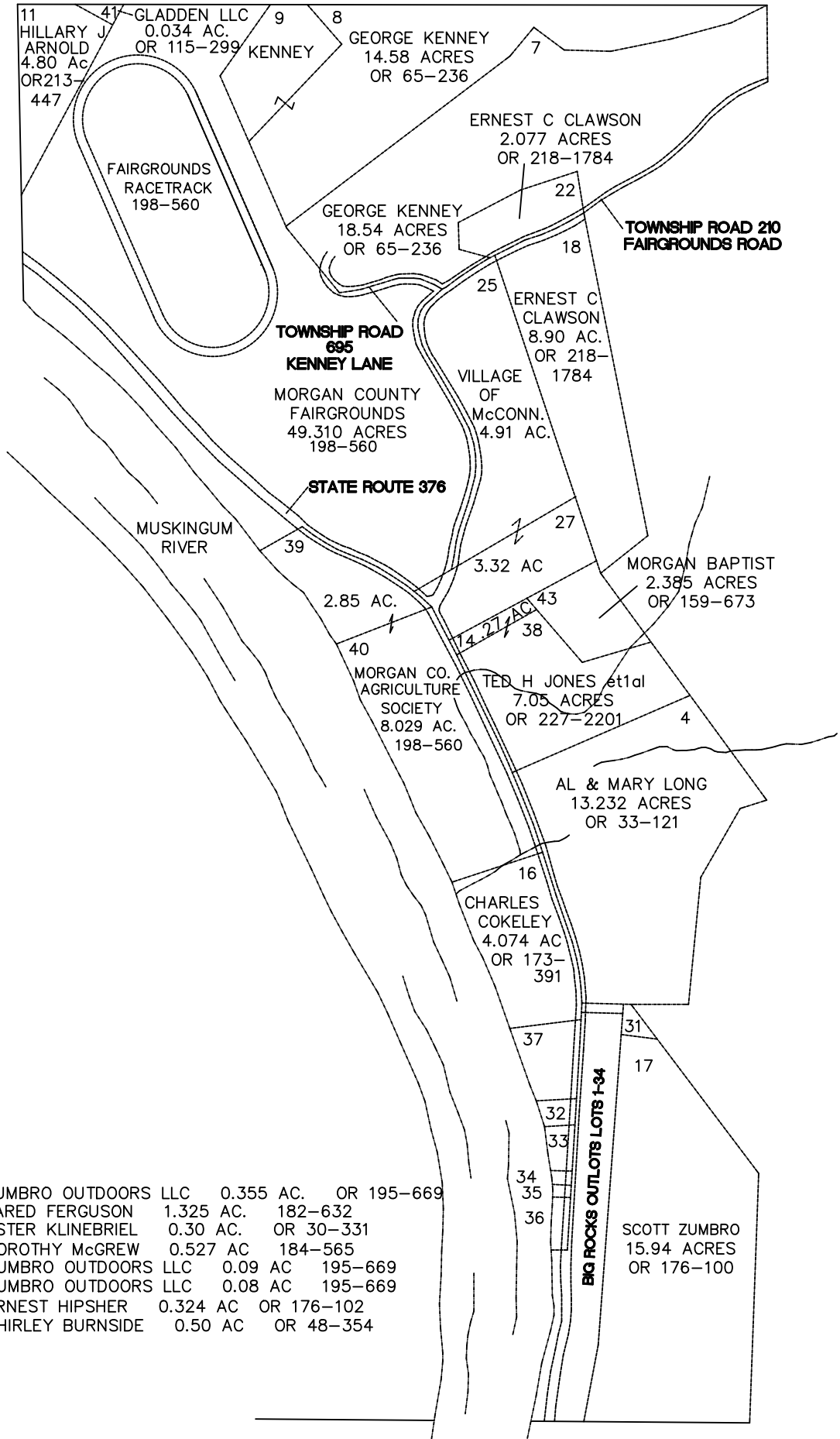
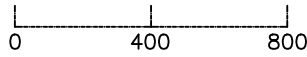


MORGAN TOWNSHIP

RANGE 12 TOWNSHIP 10 SECTION 13 WEST HALF

SCALE: 1" = 400'



- 31 - ZUMBRO OUTDOORS LLC 0.355 AC. OR 195-669
- 37 - JARED FERGUSON 1.325 AC. 182-632
- 32 - ESTER KLINEBRIEL 0.30 AC. OR 30-331
- 33 - DOROTHY McGREW 0.527 AC 184-565
- 34 - ZUMBRO OUTDOORS LLC 0.09 AC 195-669
- 35 - ZUMBRO OUTDOORS LLC 0.08 AC 195-669
- 36 - ERNEST HIPSHER 0.324 AC OR 176-102
- 3 - SHIRLEY BURNSIDE 0.50 AC OR 48-354