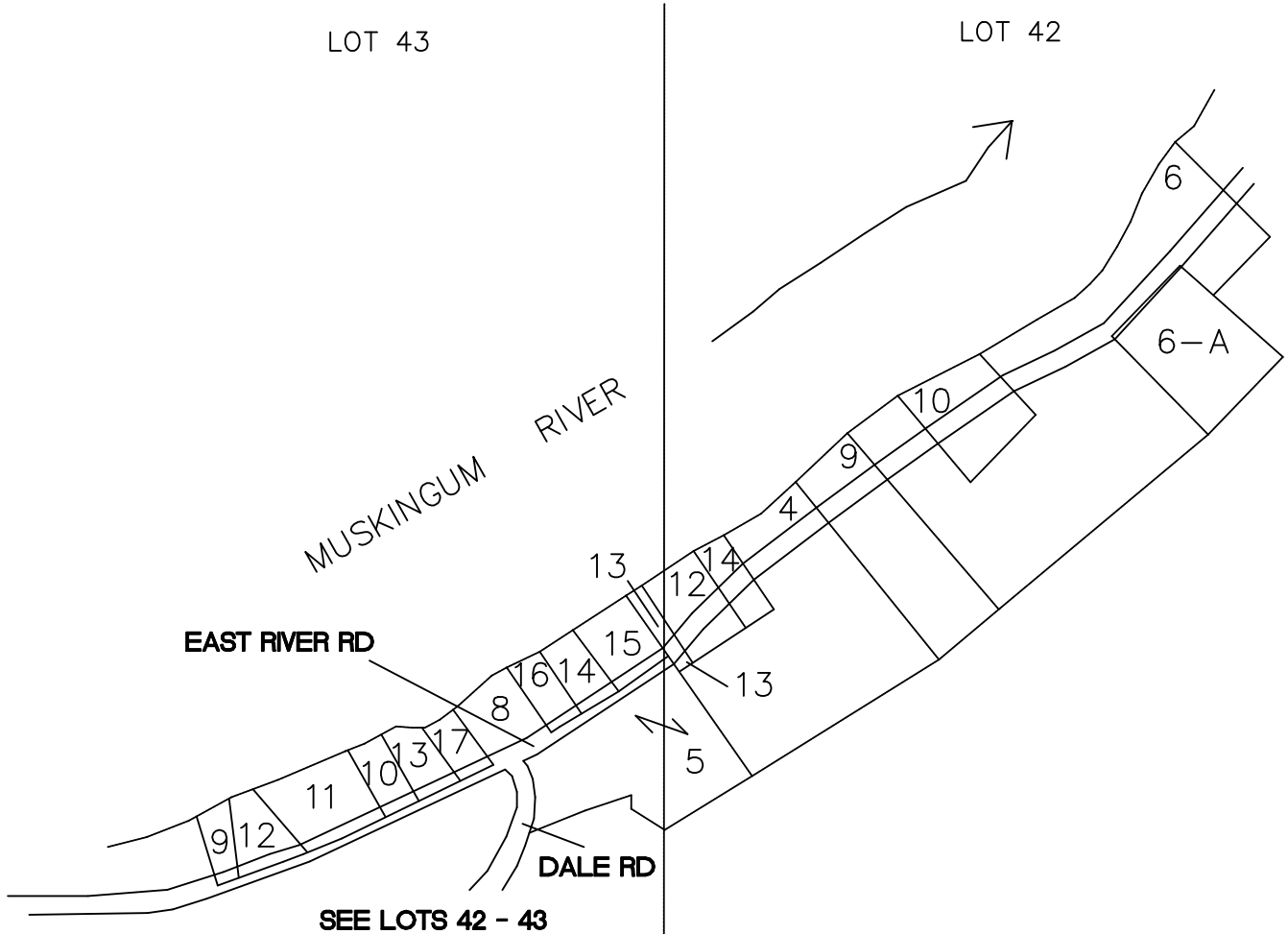


WINDSOR TOWNSHIP

RANGE 11 TOWNSHIP 8 LOTS 42 & 43 B
 PORTION OF LOTS 42 & 43, SCALE ENLARGED TO

SHOW NUMBERING SEQUENCE ONLY

*** DEEDS LACK ADEQUATE DESCRIPTIONS TO PLAT CORRECTLY



LOT 43

- 8 - BETTY DOHSE 0.925 ACRE OR 226-3042
- 9 - GENE JURY 0.75 ACRE OR 165-351
- 10 - PAUL HARSHBERGER 0.080 ACRE OR 225-1185
- 11 - PAUL HARSHBERGER 0.050 ACRE OR 225-1185
- 12 - PAUL HURSHBERGER 0.080 ACRE OR 225-1185
- 13 - HARRY HILL 0.330 ACRE 182-494
- 14 - GERALD KOSKA 0.140 ACRE 196-21
- 15 - MARY BURCHFIELD 0.280 ACRE OR 122-706
- 16 - ALICE INGRAM 0.140 ACRE 184-201
- 17 - SUE ANN WALLACE 0.125 ACRE OR 60-179

LOT 42

- 4 - PENNY GOOLEY 1.21 ACRE OR 52-601
- 5 - BETTY DOHSE 0.58 ACRE OR 226-3042
- 6 - TIMOTHY WILSON 1.574 ACRE OR 200-30
- 6-A SEYMORE SETTLE 0.90 ACRE OR 218-3046
- 9 - BRUNER & AHART 0.10 ACRE OR 39-801
- 10 - PHILLIP TICE 0.23 ACRE 164-528
- 12 - JOSEPH CAIN 0.40 ACRE OR 203-822
- 13 - DAWNA R MALONE 0.250 ACRE OR 211-1849
- 14 - DAWNA R MALONE 0.16 ACRE OR 211-1849