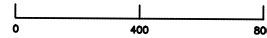


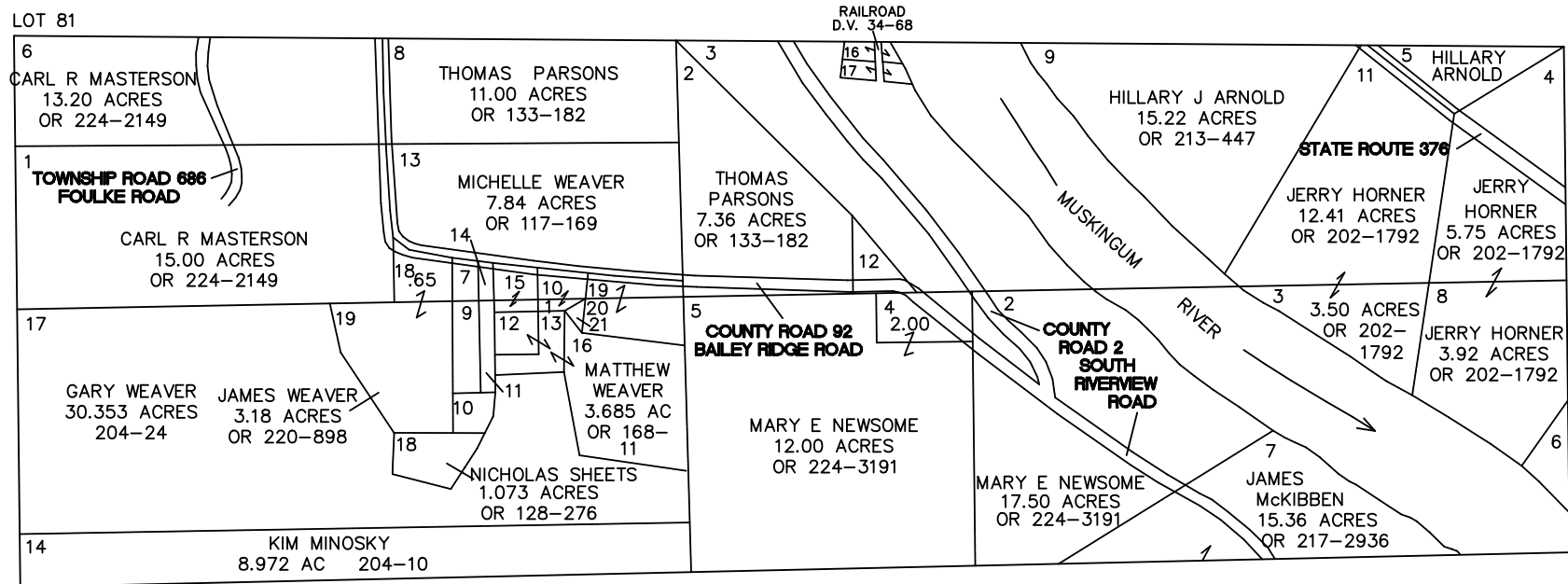
# WINDSOR TOWNSHIP

RANGE 11    TOWNSHIP 9    LOTS 81 & 82

SCALE: 1 INCH = 400 FEET



LOT 81



LOT 82

| LOT 81                      |              |            |
|-----------------------------|--------------|------------|
| 3 - DWIGHT TOMKINS          | 13.906 ACRES | 109-528    |
| 10 - JEFFREY WEAVER         | .29 ACRE     | OR 157-789 |
| 12 - MICHAEL GHEEN          | 0.640 ACRE   | OR 221-20  |
| 14 - GARY WEAVER            | 0.197 ACRE   | 204-24     |
| 15 - CONNIE STRECKLINK      | 0.379 ACRE   | OR 177-722 |
| 16 - JOHN RAILE             | 0.301 ACRE   | 133-205    |
| 17 - FAIRCHILD FAMILY TRUST | 0.192 ACRE   | OR 218-544 |
| 19 - TROY M WEAVER          | .42 ACRE     | OR 225-581 |

| LOT 82                 |            |             |
|------------------------|------------|-------------|
| 1 - JEFFREY WEAVER     | .15 ACRE   | OR 157-789  |
| 6 - ARLENE GRAHAM      | 0.720 ACRE | 200-394     |
| 12 - MATTHEW WEAVER    | 0.486 ACRE | OR 168-11   |
| 13 - MATTHEW WEAVER    | 0.586 ACRE | OR 168-11   |
| 15 - CONNIE STRECKLINK | 0.190 ACRE | OR 177-722  |
| 20 - TROY M WEAVER     | .23 ACRE   | OR 225-581  |
| 21 - TROY M WEAVER     | .08 ACRE   | OR 225-3396 |